



2ch HDMI Video Capture Manual



Overview

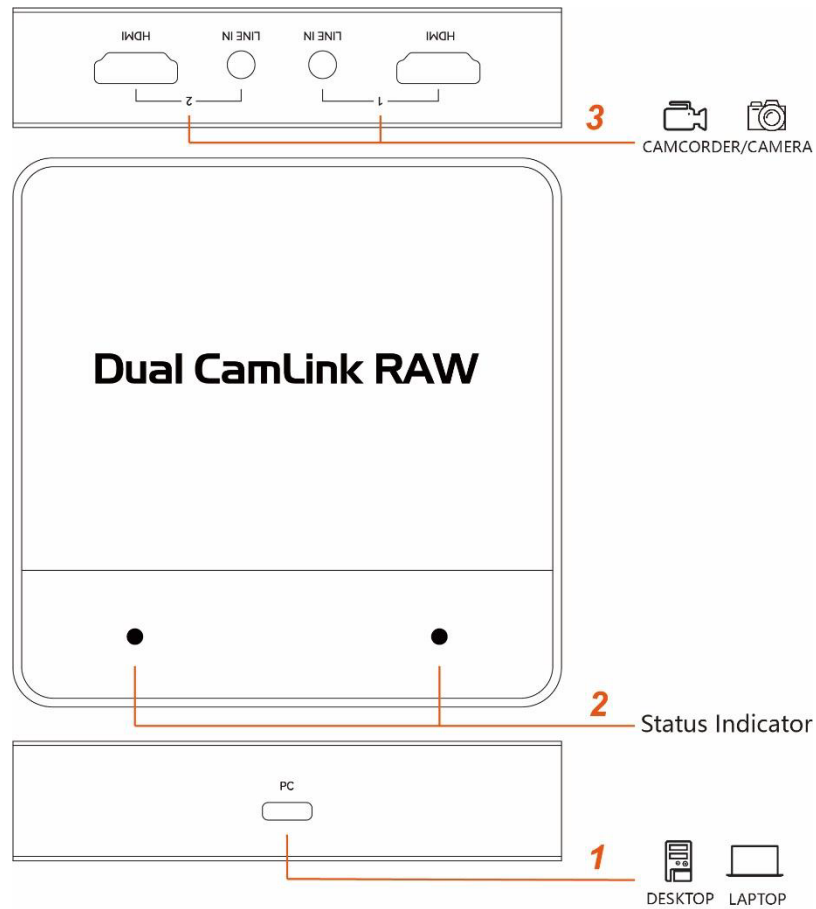
Thanks for purchasing **Dual CamLink RAW** capture card. Please read this manual before use and keep it in a safe place for future reference. You can use this device:

Capture and stream two channel HDMI signal up to 4K or RGB24 1080P60 such as Camcorder, DSLR, action camera, mobile devices and etc.

In the Box

Dual CamLink RAW x1, USB-C to A cable x1, Manual x1

Product Overview and Connections



-
1. PC: Connect to USB port of your computer with included USB-C to A cable.
 2. Status indicator: Corresponding HDMI input 1/2, BLUE-HDMI connected, GREEN-device running.
 3. HDMI/LINE IN 1/2: HDMI input port, connect to camcorder, DSLR, action camera or mobile devices with HDMI cable. LINE IN port, connect to Mixer to mix audio with corresponding HDMI input video.

Hardware

Connect your device to the USB port of the computer, wait a moment, the system will automatically recognize Dual CamLink RAW device, and you will find the device name – **ezcap Dual CamLink RAW CH1** and **ezcap Dual CamLink RAW CH2** in **Cameras** catalog and **Sound, video, and game controllers** catalog on **device manager**, which means the device is ready to work.

Camera Tips

The tips will ensure the best experience and image quality when using camera with Dual CamLink RAW capture card. These are general tips and may not apply directly to the camera you are using.

- 1, **Disable AUTO SHUTOFF**: Most cameras will automatically turn off to prevent battery drain. For video calls, the camera needs to stay on indefinitely. Automatic power shutoff settings are most often found in the power settings of the camera.
- 2, **Clean HDMI OUTPUT**: Cameras output graphical user interface elements such as

battery levels and resolution settings. This can be disabled by going into HDMI menu of camera and disabling HDMI info display, or by pressing the info button on your camera multiple times.

3, **Use an AC ADAPTER:** Most cameras cannot operate and charge at the same time. An AC adapter or dummy battery must be used to trick the camera into thinking it is running on battery power indefinitely.

4, **Set to MOVIE MODE:** Look for the Movie Mode option, typically indicated by a film camera icon on a camera's mode dial.

Software

Dual CamLink RAW capture card can be used with most capture and streaming software such as OBS, vMix, VLC, XSplit and etc. For professional live streaming or recording, we suggest use OBS.

Please go to download: <https://obsproject.com/> , then install it on your computer.

Start Work

Select Device

Double-click the OBS Studio icon on the desktop.

Click icon + under **Sources** window, and select **Video Capture Device**. Click **OK** in the new pop-up window. Please click **Device** and select **ezcap Dual CamLink RAW CH1**.

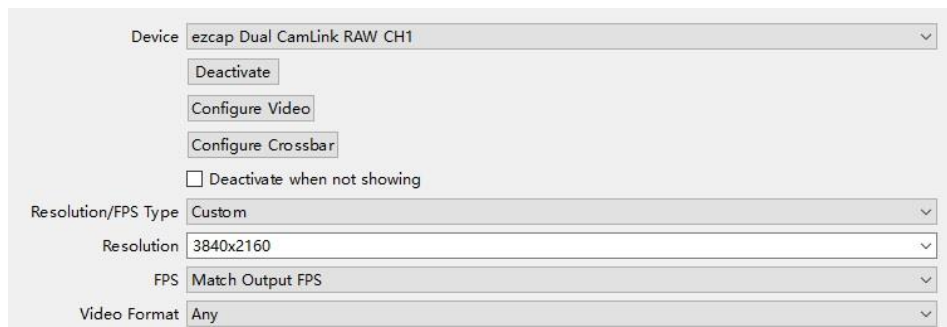
You can change the scene name and video capture device name.

Video Setting

You will see the video from **HDMI 1** port of Dual CamLink RAW appear in the preview window.

You can add channel2 video with similar setting above – ezcap Dual CamLink RAW

CH2.

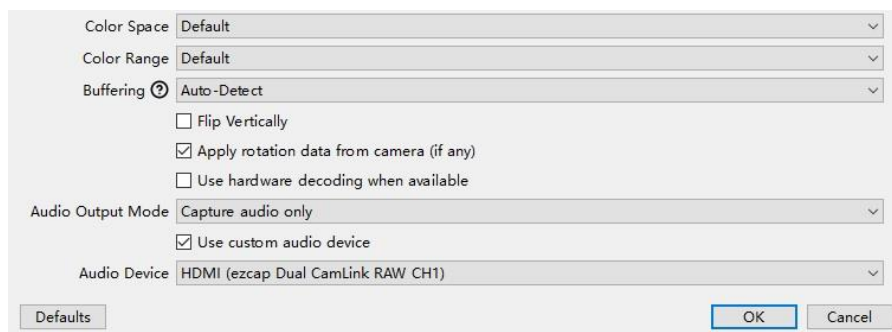


The screenshot shows a configuration window for 'ezcap Dual CamLink RAW CH1'. It includes a 'Deactivate' button, 'Configure Video' and 'Configure Crossbar' buttons, and a checkbox for 'Deactivate when not showing'. Below these are dropdown menus for 'Resolution/FPS Type' (set to 'Custom'), 'Resolution' (set to '3840x2160'), 'FPS' (set to 'Match Output FPS'), and 'Video Format' (set to 'Any').

You can click the drop-down box next to **FPS** to select the appropriate FPS, and click the drop-down box next to **Video Format** to select the video format.

Audio Setting

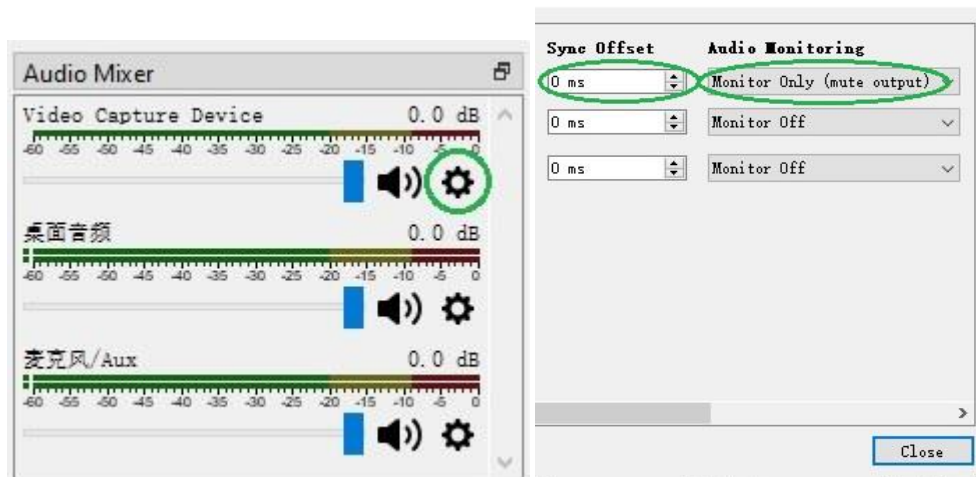
You may not be able to hear the sound after you finish above settings. Please tick **Use custom audio device**, and click the drop-down box next to **Audio Device** and select **HDMI (ezcap Dual CamLink RAW CH1)**. You hear the sound now, then click "OK" .



The screenshot shows an audio settings dialog box. It features dropdown menus for 'Color Space' (Default), 'Color Range' (Default), and 'Buffering' (Auto-Detect). There are three checkboxes: 'Flip Vertically' (unchecked), 'Apply rotation data from camera (if any)' (checked), and 'Use hardware decoding when available' (unchecked). The 'Audio Output Mode' is set to 'Capture audio only' and 'Use custom audio device' is checked. The 'Audio Device' is set to 'HDMI (ezcap Dual CamLink RAW CH1)'. At the bottom, there are 'Defaults', 'OK', and 'Cancel' buttons.

If you still cannot hear the sound, please click **Setting** under **Audio Mixer** and **Video**

Capture Device at the bottom middle of OBS panel as below picture and select **Advanced Audio Properties**. Then click **Audio Monitoring** and select **Monitor Only (mute output)** (mute output).



Of course, you can also set the audio according to your actual application, and set a certain length of time to achieve audio and video synchronization, such as 300ms. You can also set audio for channel 2 devices.

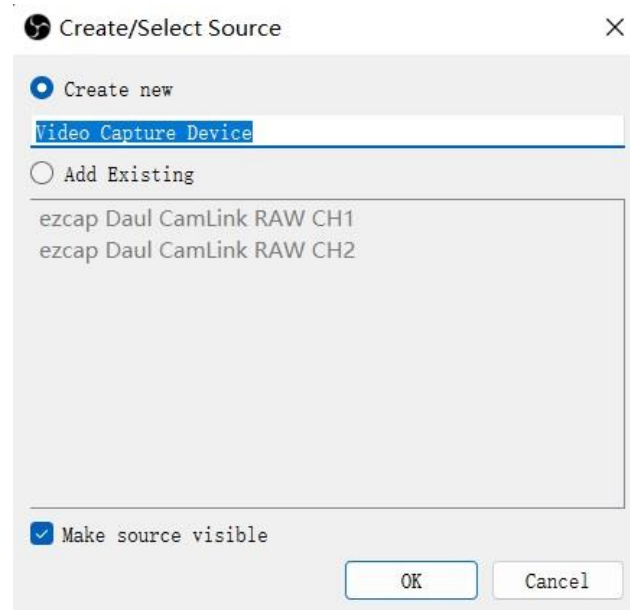
Multi-scene switch

A powerful video mixer engineered for two cameras production, Dual CamLink RAW equips you to capture two HDMI signals with ultimate ease and flexibility.

Add different scenes according to your actual video production needs on OBS. In each different scene, each HDMI video can be reused in different video combination modes.

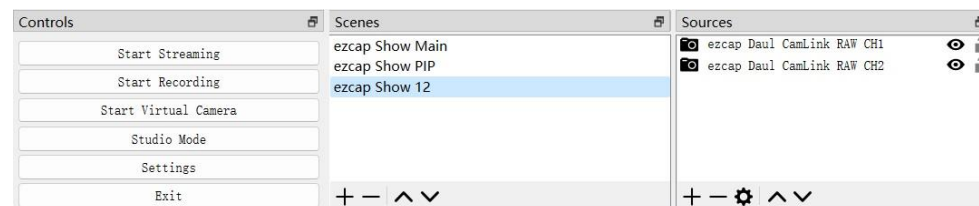
You just need to tick **Add Existing** when adding the same device in different scenes and then select the desired camera video. Each video can be adjusted to the display combination you need in this scene, such as Picture in Picture, Side by Side, or single

picture.



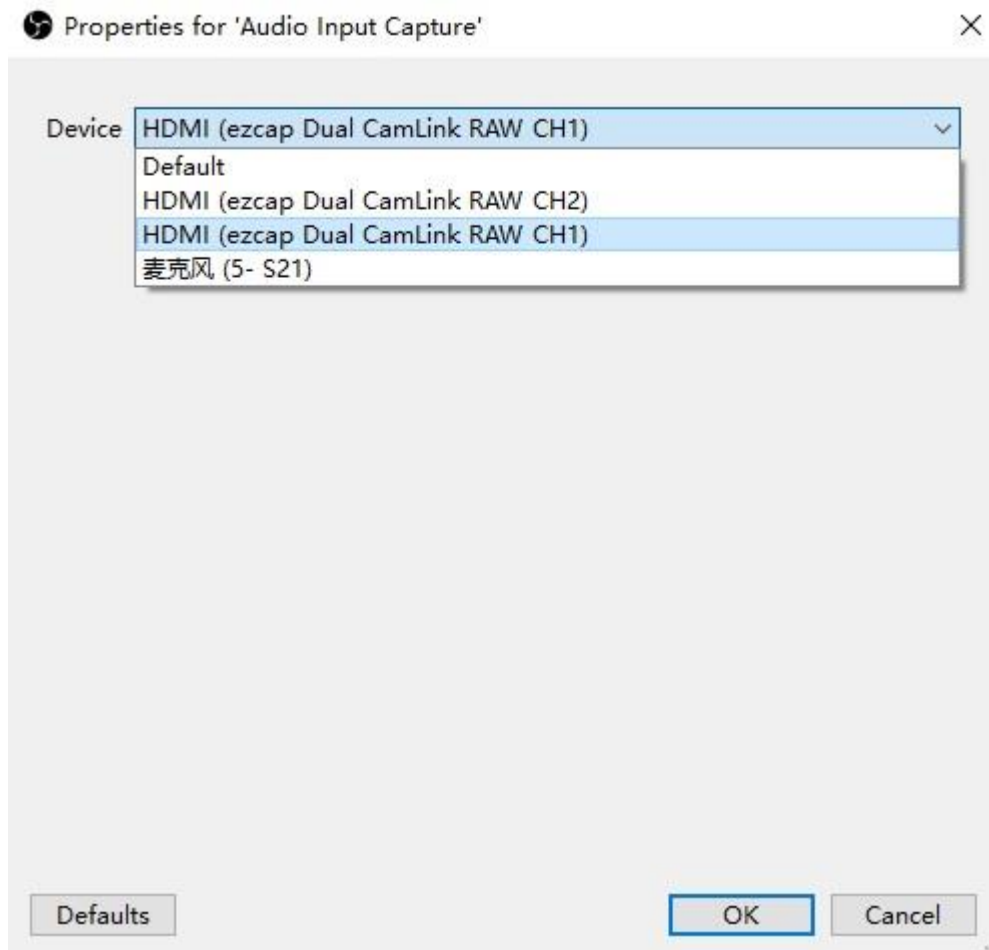
You can switch the different picture combination between the different scene right

now.

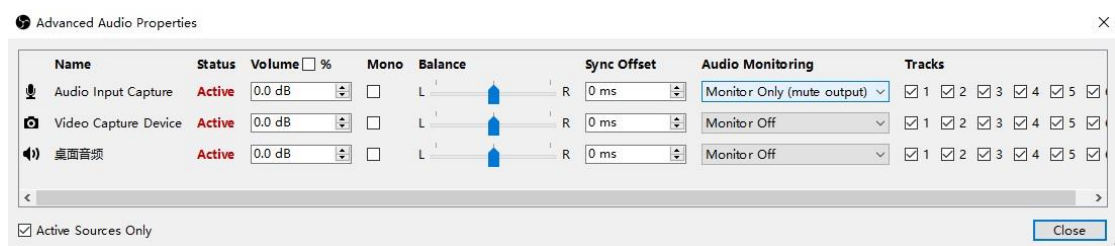


Note: If you are using the OBS version as Ver. 29 or higher, maybe you need to set up the audio device with the following methods

Click the icon+ under the source area in the bottom left corner of the OBS panel, and then select **Audio Input Capture**. Click **OK** in the pop-up window, where you can also rewrite the new name for the device. After clicking **OK**, click on the drop-down box next to the **Device** in the pop-up window, select **ezcap Dual CamLink RAW CH1**, and then click "OK"



Click the **settings** icon on the **Audio Mixer** interface, and then select **Advanced Audio Properties**. In the new pop-up window, in the **Audio Input Capture** column, click **Audio Mornitoring**, and then select **Monitor Only (mute output)**.



In the **Audio Mixer** interface, in the **Video Capture Device** column, click the **volume** icon to turn off audio output. You can turn on or off the sound output from the device by clicking on the volume icon in the **Audio Input Capture** column.



Recording

Click **Settings** in the low right corner of OBS panel, and click **Video** on the left in the pop-up Settings window. Click the drop-down box next to **Base (canvas) Resolution** to select the appropriate resolution, and click the drop-down box next to **Output (Scaled) Resolution** to select the output resolution. Click the drop-down box next to **Common FPS Values** to select the FPS values.

Click **Output** on the left of Settings window as above, in **Recording** column, you can set **Recording Path**, **Recording Quality**, **Recording Format**, **Encoder**.

After setting, click **Apply** and **Ok** in the low right corner of Settings panel, then simply click **Start Recording** in the low right corner of OBS panel to start recording videos, and click **Stop Recording** to stop recording.

Streaming

Click **Output** in the **Settings** panel, in the **Streaming** column, set video quality for streaming (adjust depends your computer, network speed), then click icon Apply and OK in the Settings panel. Click **Stream** in the Settings panel, then you can click the

drop-down box next to **Service** to choose the software platform you want, then click icon Apply and OK in the Settings panel.

Click **Start Streaming** in the low right conner of OBS panel to start streaming, and click **Stop Streaming** to stop streaming.

Note: Please click the **help** at the top of the OBS interface, and learn more about OBS in the link that pops up.

Specifications

Interface: USB 3.2 (Gen 1) Type-C

Video Input: HDMI ® 1.4 enabled x2

Audio Input: HDMI 1.4 x2, 3.5mm Line In (TRS 3-pole) x2

Max. HDMI Input Resolution: 2160p30, 1080p60

Max Record Resolution for HDMI 1:

3840 x 2160 - 30fps/MJPG.

2560 x 1440 - 120fps/MJPG.

2560 x 1080 - 60fps/MJPG.

1920 x 1080 -120fps /NV12/I420/MJPG, 60fps/NV12/I420/ YUY2/RGB24/MJPG.

1280 x 720 - 60fps/NV12/I420/YUY2/RGB24/MJPG.

Max Record Resolution for HDMI 2:

1920 x 1080 - 60fps/NV12/I420/YUY2

1280 x 720 - 60fps/NV12/I420/YUY2

720 x 576 - 60fps/NV12/I420/YUY2.

720 x 480 - 60fps/ NV12/I420/YUY2

Dimensions (W x D x H): 99 x 99 x 23 mm

Weight: 190g

* The terms HDMI, HDMI High-Definition Multimedia Interface, HDMI trade dress and the HDMI Logos are trademarks or registered trademarks of HDMI Licensing

Administrator, Inc.

Operating System

Windows 10 x64 / 11 x64, USB 3.2 (Gen 1) Port x1

Desktop: Intel Core i5-6XXX or above, NVIDIA GeForce GTX 1060 or above.

Laptop: Intel Core i7-7700HQ or above, NVIDIA GeForce GTX1050 Ti or above.

8 GB RAM recommended.