

Edis

Digital 9 Channel Audio Mixer User Manual



Product Introduction

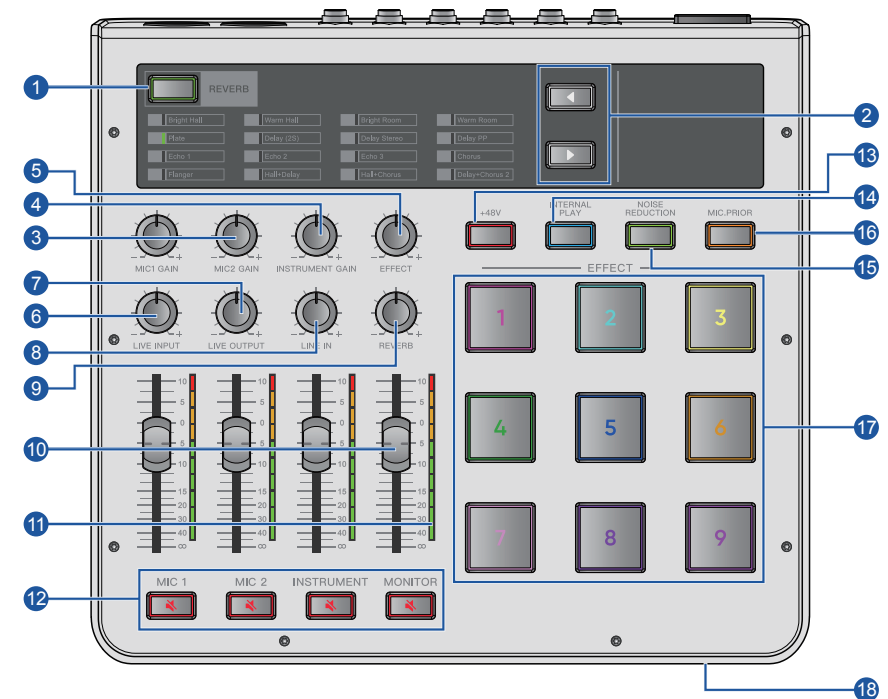
The Digital 9 Channel Audio Mixer is a digital audio mixer designed specifically for live streaming applications, integrating essential live features such as mixing, sound effects, and audio enhancements. It allows for the connection of two mobile devices or a PC simultaneously, transmitting digital audio directly to live broadcast equipment. With its lightweight and portable design, the Digital 9 Channel Audio Mixer offers a user-friendly interface with a clear and intuitive panel layout. Powered by a 5V/1A USB-C connection, it can draw power from a mobile phone charger or power bank, making it highly versatile. The Digital 9 Channel Audio Mixer is ideal for live streaming, recording, karaoke, and various audio applications across smartphones, tablets, and PCs.

Functions include:

- 4 sliding faders, respectively adjust MIC 1, MIC 2, INSTRUMENT, MONITOR volume, and equipped with 4 mute buttons.
- 8 volume knobs, respectively adjust MIC1 GAIN, MIC2 GAIN, LIVE INPUT, LIVE OUTPUT, INSTRUMENT GAIN, LINE IN, EFFECT volume and REVERB volume.
- 9 large custom sound effects buttons, can change sound effects via USB.
- +48V phantom power switch, which can provide power to the microphone port for live streaming condenser microphones.
- Internal play switch, when turned on, the 2 USB-C input audio does not return to the USB-C port, eliminating the echo problem.
- Noise reduction switch, when turned on, reduces the ambient noise picked up by the microphone.
- MIC.PRIOR switch, when there is audio input after the microphone is turned on, it will attenuate the audio of the accompaniment, instrument, and sound effect.
- REVERB switch, up to 16 kinds of preset reverb effects, suitable for a variety of scene applications.

Product panel introduction

Front panel



- 1 REVERB button: There are 16 kinds of simulated live reverb effects preset internally, and one of the 16 kinds of internal preset effects can be selected for use. Press the [REVERB] button, the LED indicator will light up green to indicate that the reverb function is on; and use the [◀] / [▶] button to select the desired effect. Then press [REVERB], the LED indicator goes off, which means the reverb function is turned off.
- 2 ◀/▶ Control buttons: Forward or backward switching analog reverb effect function.

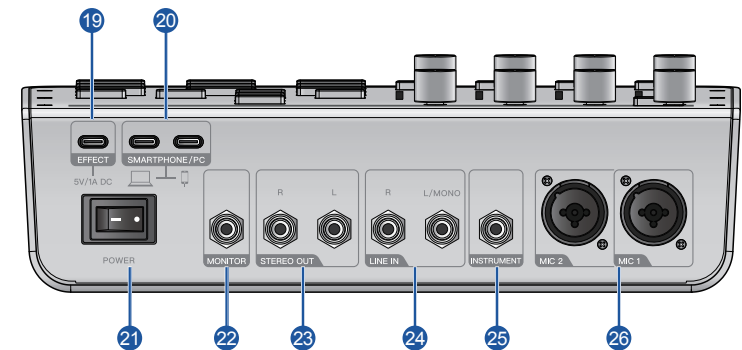
User's Manual

- ③ MIC1/2 GAIN microphone gain knob: Determine the basic volume of MIC 1 and MIC 2 respectively. Adjust these knobs to increase or decrease the volume of the current channel, with a maximum gain of 45dB.
- ④ INSTRUMENT GAIN Instrument gain knob: Adjusts the basic volume of the sound source from a guitar or other high-impedance input instrument. The maximum gain is 45dB.
- ⑤ EFFECT knob: Adjust the volume of custom sound effects.
- ⑥ LIVE INPUT knob: Adjust the volume of the audio source input from the USB interface.
- ⑦ LIVE OUTPUT knob: Adjust the recording volume output from the device to the USB interface.
- ⑧ LINE IN knob: Adjust the output volume of the sound input from the audio device or other sound sources connected to the channel.
- ⑨ REVERB knob: Adjust the volume of the reverb effect.
- ⑩ Fader: Adjust the audio output level of MIC 1, MIC 2, instrument or monitor.
- ⑪ Main level meters: These peak level meters are composed of 10 LEDs, with three colors representing signal levels in different ranges and a traffic light style. Their range ranges from -40dB (Green) at the bottom, to 0dB in the middle, and then to PEAK (Red) at the top.
- ⑫ Mute button: Turn on (LED lights red) or turn off (LED off) the mute function. Use this button to mute MIC 1, MIC 2, instruments, or monitors when you want to take a break or when you encounter a special situation while livestreaming.
- ⑬ +48V button: Can turn on the phantom power supply on MIC 1 and MIC 2 (Highlighted in red). When this button is turned on, DC+48V phantom power will be supplied to the XLR plug on the MIC input socket. When using a condenser microphone that requires phantom power supply, please turn on this switch button.
- ⑭ INTERNAL PLAY button: Prevent echo phenomenon when using live broadcast.
- ⑮ NOISE REDUCTION button: Effectively reduce complex environmental noise.
- ⑯ MIC PRIOR button: Audio for accompaniment, instruments, C-style performances, and voice input is attenuated during voice input. When there is no audio input from the microphone, it returns to the original volume.

User's Manual

- ⑰ EFFECT custom sound effect buttons: 9 kinds of custom sound effect buttons. These buttons can play customized audio files. You can connect to the computer through EFFECT's USB-C interface and replace the customized sound effects in the form of a USB flash drive.
Note: Replace the produced effect file with the factory effect file (the name of the file needs to be changed to: 00001 — 00009), otherwise the effect file will not be recognized; the total memory of the sound effect file is 32M, and supports MP3 and WAV audio formats.
- ⑱ Main headphone [] output jack: Used to connect your headphone jack.

Rear Panel



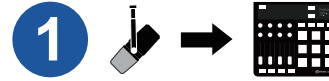
- ⑰ EFFECT/5V DC port: Used to replace your customized exclusive live sound effects and commercially available USB power adapter or USB mobile power supply.
Notice
 - Before using this product, please be sure to read the safety precautions for the USB power adapter or USB mobile power supply you are using.
 - Please use a USB mobile power supply or USB power adapter with an output voltage of 4.8 V to 5.2 V and an output current of at least 1A or higher.

- 20 USB 2.0 jack: Connect your computer or smartphone/tablet here.

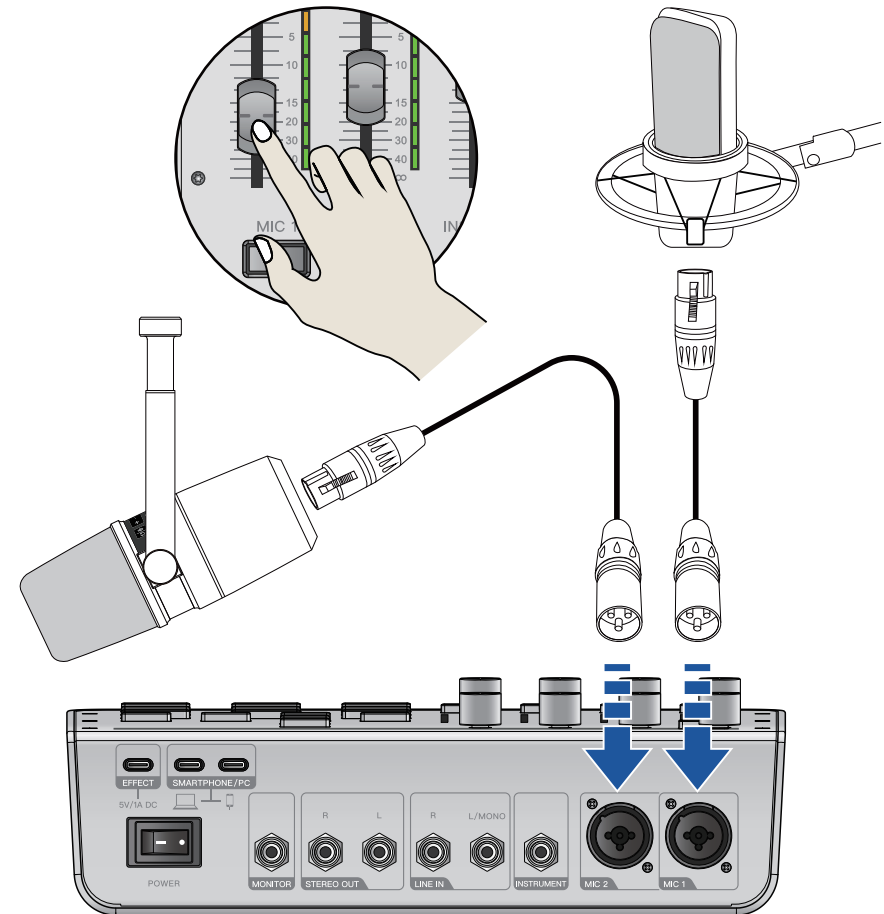
Notice

- Make sure to use the USB cable packaged with this product.
 - Do not connect any other devices except for an smartphone, tablet or a computer to the USB 2.0 port.
 - Before plugging or unplugging the USB cable, exit all applications to ensure that the product is not transferring any data.
 - After you unplug the cable, make sure to wait for at least six seconds before plugging the cable in again. Rapidly plugging in and unplugging the cable may cause a malfunction.
- 21 Power toggle switch: used to turn on (I) or turn off (O) the power of the device.
 - 22 MONITOR output jack: used to connect headphones, this jack supports stereo phone type plugs.
 - 23 STEREO output jack: Supports a phone type plug for connecting to active speaker or recorders, and outputting mixed sound in stereo.

Quick Start Guide



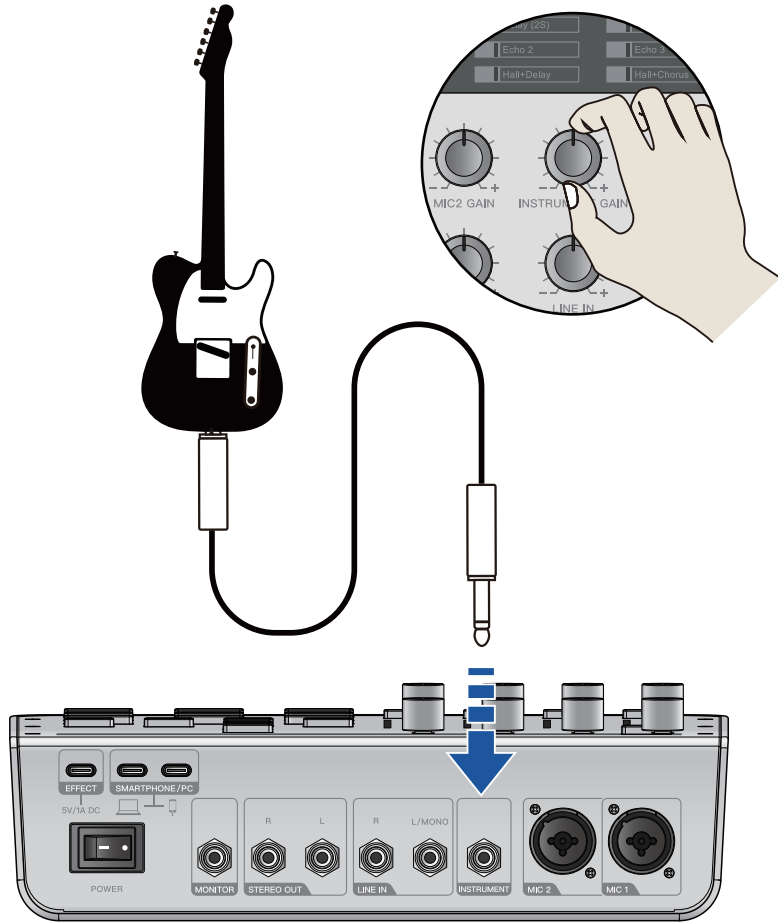
Connecting your microphone



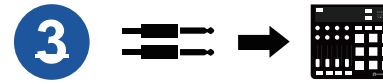
User's Manual



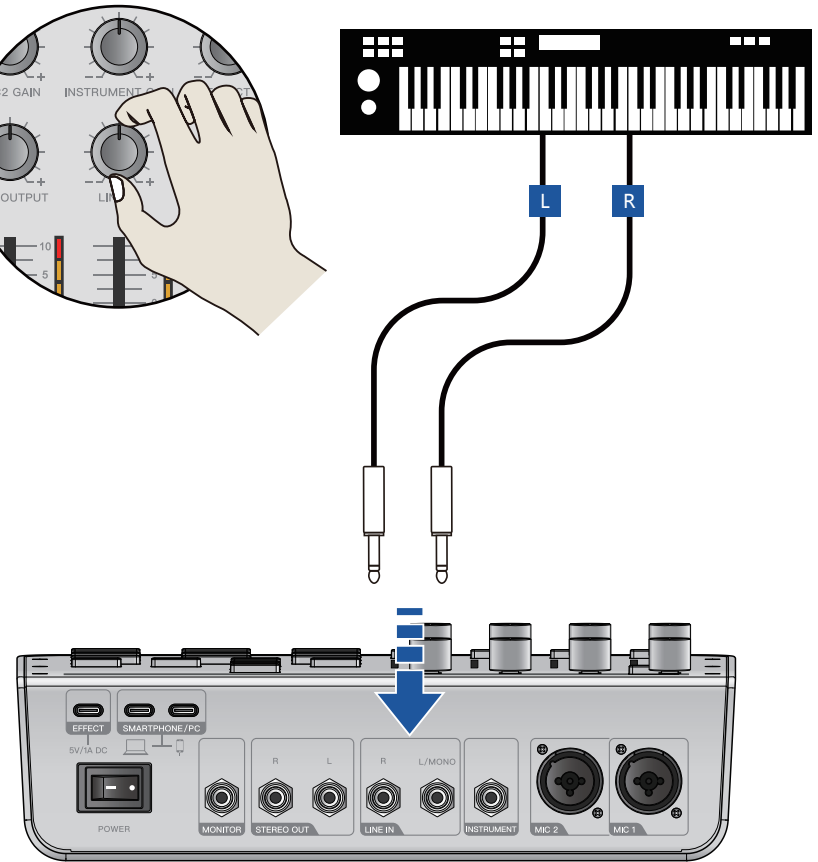
Connecting your musical instrument



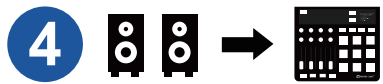
User's Manual



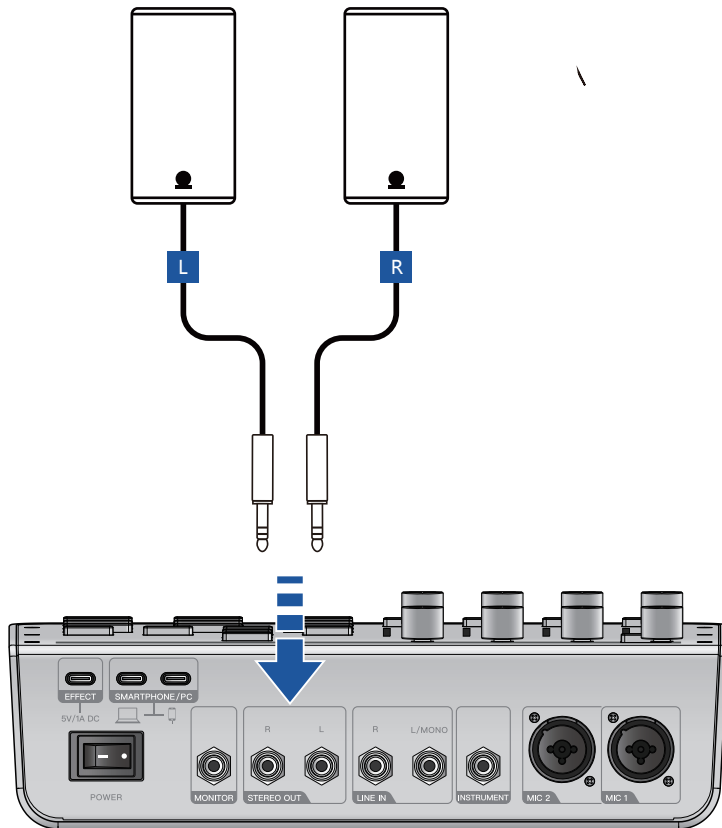
Connecting your line in device



User's Manual



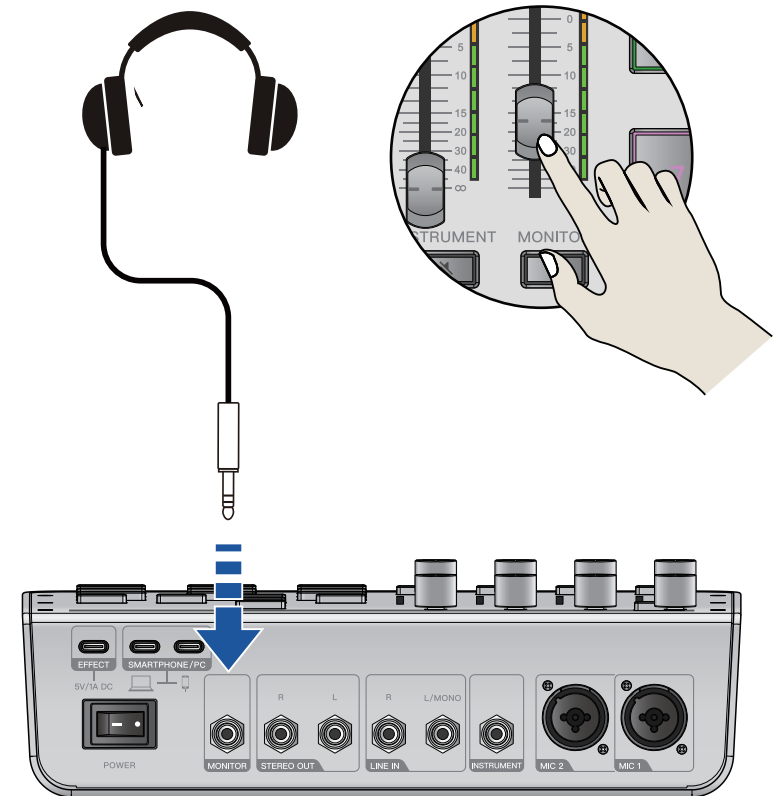
Connect to your active speaker



User's Manual



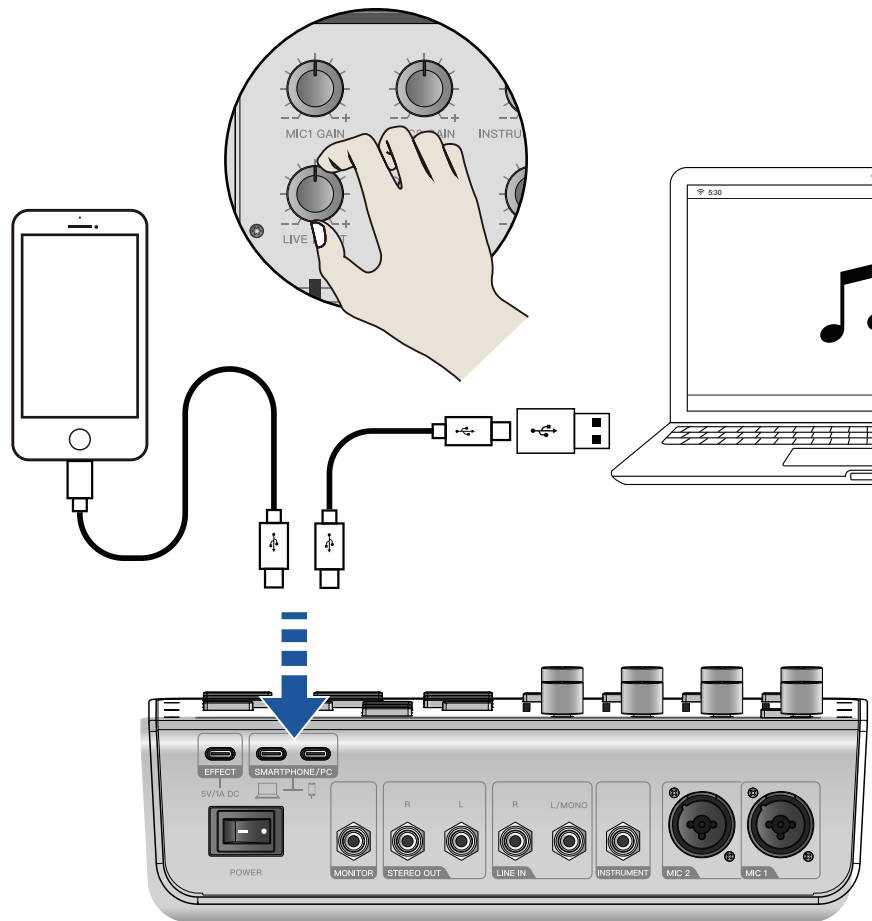
Connecting your monitor device



User's Manual



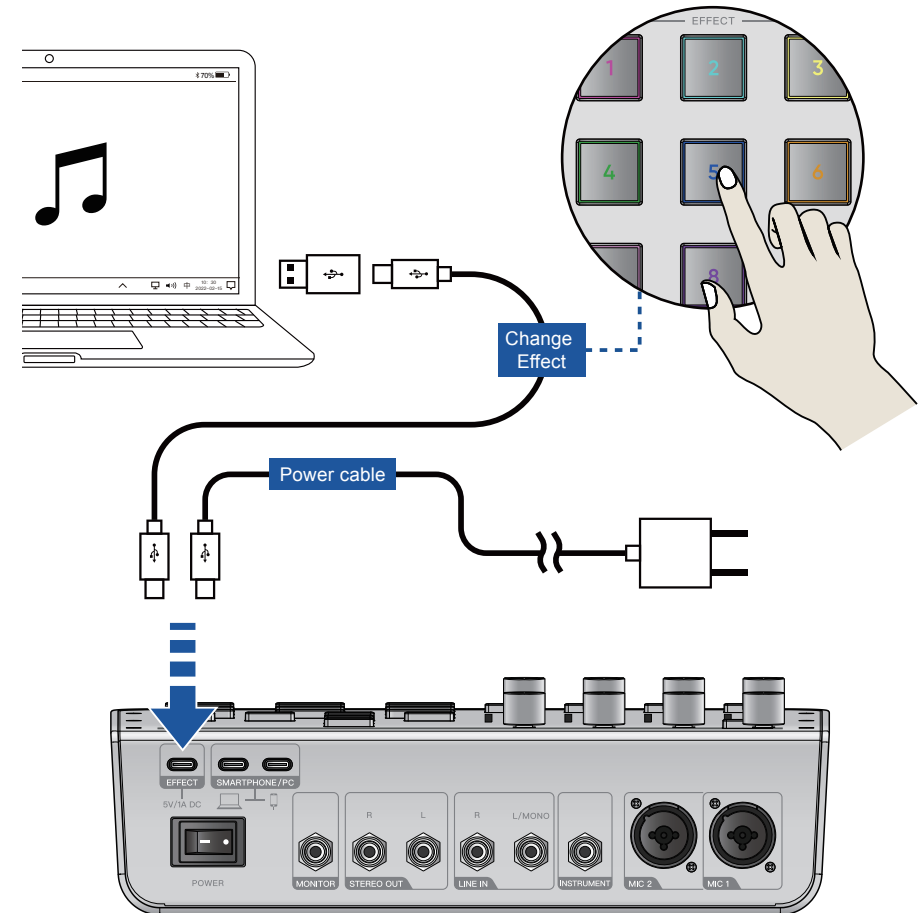
Connect your smartphone or computer through a data cable



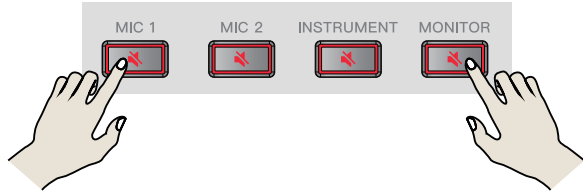
User's Manual



Connecting your PC with a cable



Restore factory setting



* Restore factory setting: Press and hold the MIC1 and [MUTE] button on the MONITOR channels for 10 seconds to restore the factory default parameters.

Specification

Sample Rate:	24-bit, 48KHz
Frequency Respond:	20Hz to 20KHz
System Delay:	1.5 ms
T.H.D.:	< 0.05%
Input Crosstalk:	>65dB @ 1KHz (Adjacent Channels)
Signal to Noise Ratio:	90dB Single channel - fader max (A weighted)
Dynamic Range:	90dB Single channel - fader max (A weighted)
Common Mode Rejection Ratio:	>60dB @ 1KHz
MIC Input Impedance:	3K Ω (XLR Balance); 6.6K Ω (1/4")
MIC Gain:	0 to 45dB (XLR)
Power Supply:	DC 5V (1A)
Dimensions (mm):	260 (L) x 230 (H) x 89 (D)
Weight:	≈ 1.5Kg

PRECAUTIONS

Please read carefully before proceeding
Please keep this manual in a safe place for future refer - ence.

WARNING

Always follow the basic precautions listed below to avoid the possibility of serious injury or even death from electrical shock, short-circuiting, damages, fire or other hazards. These precautions include, but are not limited to, the following:

Power supply/Power cord

- Only use the voltage specified as correct for the device. The required voltage is printed on the power supply connector of the device.
- Use only the provided USB cable or a standard USB-A to USB-C 3.0 cable.
- Do not place the power cord near heat sources such as heaters or radiators, and do not excessively bend or otherwise damage the cord, place heavy objects on it, or place it in a position where anyone could walk on, trip over or roll anything over it.

Do not open

- Do not open the device or attempt to disassemble the internal parts or modify them in any way. This device contains no user - serviceable parts, If it should appear to be malfunctioning, discontinue use immediately.

Warning about humidity

- Do not expose the device to rain, use it near water or in damp or wet conditions, or place on it any containers (such as vases, bottles or glasses) containing liquids which might spill into any openings.
- Never insert or remove an electric plug with wet hands.

If you notice any abnormality

- If the power cord is frayed or damaged , there is a sudden loss of sound during use of the device or it emits unusual smells or smoke, please turn off the power switch immediately.
- If this device should be dropped or damaged, immediately turn the power off, disconnect the electric plug from the outlet.