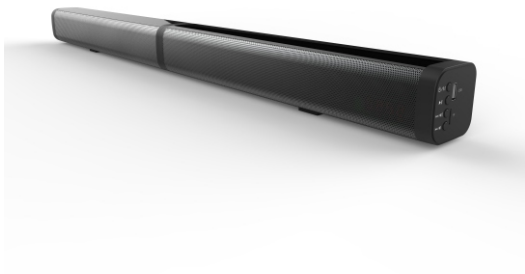


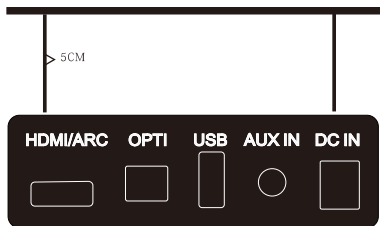
Edis

**EA161 Two Part Bluetooth
Soundbar 40 Watt**

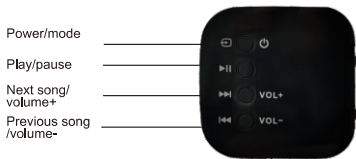


User Manual

TV Bottom



Button on Soundbar



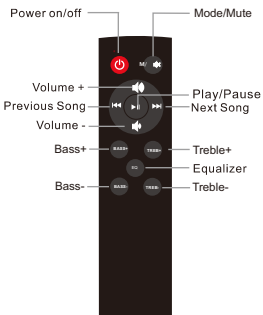
: Long Press for power on and power off, short press for difference mode

: Press for play of pause the music. at Bluetooth mode, long time to disconnect Bluetooth.

VOL+ : Long Press for volume+,short press for next song.

VOL- : Long press for volume-,short press for previous song.

Remote Control



: Press for power on/off.

: Short press for difference mode, long press for mute.

: Press for play or pause music (at Bluetooth and USB/TF Mode).

: Press for next song (at Bluetooth and USB/TF Mode).

: Press for previous song (at Bluetooth and USB/TF Mode).

: Press for volume up.

: Press for volume down.

: Press for Bass up.

: Press for down.

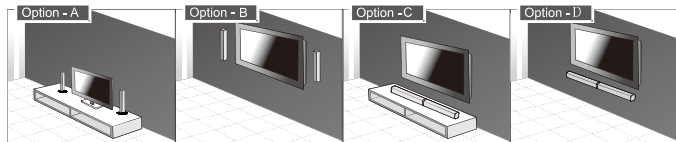
: Press for treble up.

: Press for treble down.

: Press for difference EQ.

Installation

This soundbar unit can be used either as a single soundbar or as 2-piece tube speakers. Installation options include:



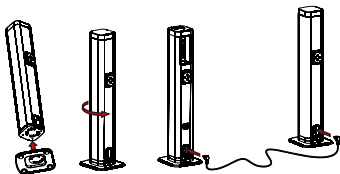
Option A:
Two tube speakers
installed on stands

Option B:
Two Tubespeakers
vertical wall-mounted

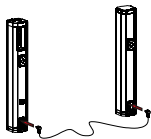
Option C:
Single soundbar
horizontally with rubber feet

Option D:
Single soundbar
wall-mounted

Stand mounting (If using option A),
Attach a stand each to the two separate pieces and twist so secure, as illustrated below.
please noted use the long (1.5M) R&L Connect cable.

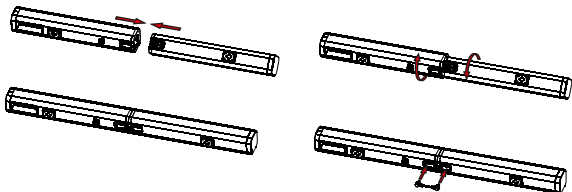


Vertical mounting (If using option B),
use the long (1.5M) R&L Connect cable. And the wall mount screw wall-mounted



Installation (Cont.)

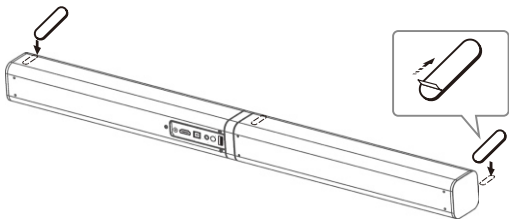
Horizontal mounting (if using option C and D)
Align the two separate and twist to secure, as illustrated below
please noted use the short (80mm) R&L Connect cable



Rubber feet installation (if using option C)

You can extend the height of the unit, if required. To do so, attach the supplied rubber feet as follows.

- Ensure the surface of the soundbar is clean prior to attaching the rubber feet.
- Turn the unit upside down.
- Remove the backing paper from the rubber feet.
- Stick the rubber feet to the bottom of the unit, as illustrated below.



Installation(Cont.)

Wall mounting (f using option B And D)

if use option B ,Mounting the bracket 5cm side of the TV as the illustration

if use option C, Mounting the bracket 5cm to the bottom of the TV.

Instructions (Cont.)

USB

1. Power-on the ROCKBAR by connecting it to an AC power source and pressing the Power/Standby button.
2. Plug in your USB flash drive. The unit will automatically read the files and begin playing music.
3. You can control playback from the ROCKBAR (volume) or the remote control (volume, tracks, play/pause, stop).
4. To exit USB mode you can remove your USB flash drive or press the Power/Standby button on the side of the ROCKBAR to select another mode. To return to USB mode plug in a USB flash drive or press the Power/Stand-by button until the LCD display shows the letters "US". You can also press the INPUT button on the remote control to exit from or return to USB mode.

Please note: the ROCKBAR supports USB drives up to 32Gb and the MP3 file format. The USB port does not support charging.

HDMI (ARC)

The ROCKBAR can be connected to your TV or receiver via an ARC enabled HDMI port. ARC stands for "Audio Return Channel" and has been available on most TV's, receivers, and soundbars since the HDMI 1.4 standard was introduced in 2009. The ARC protocol offers two-way communication between devices over a single HDMI connection. Simply put, this means that you can use the HDMI ARC port (if available) as an input and an audio output. Check your specific device's manual to see if it features an HDMI ARC port.

1. Power-on the ROCKBAR by connecting it to an AC power source. Press the Power/ Standby button on the side of the ROCKBAR and continue to press it until the LCD display shows the letters "Hd". You can also press the INPUT button on the remote control to reach HDMI mode.
2. Connect a standard HDMI cable to your sound bar and connect the other end to your TV's HDMI ARC port. Most TV's feature ARC output over only one HDMI port. This port should be labeled as HDMI ARC. If the HDMI ports aren't clearly labeled, you can check the TV manual, which should indicate which HDMI port to use and if the ARC feature needs to be manually activated.

Please note: the ROCKBAR must be plugged into an ARC enabled HDMI port. It will not work with a standard HDMI port. Check your specific device's manual to see if it features an HDMI ARC port.

Playing Bluetooth Enabled Devices:

You can listen to tracks from a media device if connected to the unit via Bluetooth wireless technology.

The first time you connect Your Bluetooth device to this player, you need to pair your device to this player.

1. During on mode, press the MODE Button repeatedly on the unit or the remote control "BT" to select Bluetooth mode.
2. Activate your Bluetooth enabled device and select the search mode: "SAMTRONIC", will appear on your Bluetooth device list.
3. Select "SAMTRONIC" from the pairing list and connect it, if need password, please enter "0000"

AUX Operation:

1. While in the ON mode, press the MODE button repeatedly on the unit or press the button "AUX" on remote control to select AUX mode.
2. Connect your audio device use the audio cable.
3. operate you audio device directly for playback features.

Optical Operation:

1. While in the ON mode, press the MODE button repeatedly on the unit or the "OPT" button on remote control to select optical mode.
2. Connect your audio device use the optical cable. (please remove the protect cap on the top before use the optical cable).
3. operate you audio device directly for playback features.

Noted:

If there no sound is coming out of the unit, make sure the audio setting of your source player (e.g. DVD Player, Game player, TV) is set to PCM with optical output)

Specification:

Power:RMS 20W*2

SNR:>92dB

Frequency response:100Hz-20kHz

Voltage:100-240V~50/60Hz DC18V/2A

Speaker Driver: 4pcs 50mm

full frequency driver

Input sensitivity:850mV

Size:946*60*60mm(jointed together)

473*60*60mm(split to two parts)

Packing List

Soundbar speaker	1 set
Adaptor	1 pcs
Aux in cable	1 pcs
Connect cable	2 pcs
Remote control	1 pcs
Manual	1 pcs
Wall mount screw	2 pcs
Foot pad:	2 pcs
Rubble fee:	2 pcs