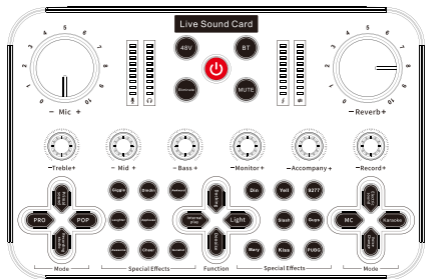


EA40 Smart Mixer Sound Card User Manual



I. Product profile

Hello, dear customer. Thank you for buying our products.

Before formal use, please read the manual carefully to ensure the correct use of this product and the proper preservation of the manual for future use. This product is a professional singing live mixer, built-in digital DSP chip: support all live broadcast platform, support mixing switch, simple input mute control, reverberation melodies, text quality shouting wheat, special effect sound, TYPE-C computer connection, perfect to solve the diverse needs of mobile phone and computer live users!

II. Packaging list host

Sound card	x1
Data line	x1
Live line	x2
Product description product	x1
Certificate	x1

III. System requirements

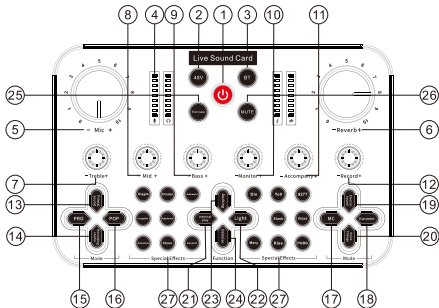
Android、IOS、Windows are fully compatible

IV. Software support

Sing APP: national Kou, cool I sing, KuGou music, Baidu music, sing bar, sing and so on.

Live broadcast APP: Reflecting guests、Pepper、YY、Douyu、The whole people TV、Kuaishou、TikTok、Tiger teeth and so on.

V. Schematic diagram of the mainframe



1. Power supply: Press the power key for three seconds to switch on, turn on the working indicator white.
- 2.48V: 48V works when turned on, 48V does not work when turned off.
3. Bluetooth : When turned on, the indicator light flashes, turn on the device and search for "K600" to connect, after the connection is successful, the indicator light is always on, and it can be used normally .
- 4.Volume indicator: microphone, monitor, accompaniment, reverb volume adjustment indicator.
- 5.Mic:Adjust the volume of the microphone, and the indicator light of the microphone will change accordingly.
- 6.Reverb: Adjust the volume of the reverb, the reverb indicator will change accordingly.
7. Treble: Adjust the treble of the microphone, turn left to reduce the treble, turn right to increase the treble.
8. Mid:To adjust the midrange of the microphone, turn the midrange to the left to reduce the midrange, and rotate it to the right to strengthen the midrange.
- 9.Bass:Adjust the bass of the microphone, turn left to reduce the bass, turn right to increase the bass.
10. Monitor : Adjust the monitor volume, the monitor sound will change accordingly .
- 11.Accompaniment: Adjust the volume of the accompaniment, accompaniment indicator will change accordingly.

12. Record: Adjust the recording volume, the recording sound will change accordingly .
13. Primal sound : Scene mode, the indicator light flashes to indicate that it has switched to this mode.
14. Recording studio: Scene mode, the indicator light indicates that it has been switched to this mode.
15. Professional : Scene mode, the indicator light indicates that it has been switched to this mode.
16. popular : Scene mode, the indicator light indicates that it has been switched to this mode.
17. MC: Scene mode, the indicator light indicates that it has been switched to this mode.
18. Karaoke : Scene mode, the indicator light indicates that it has been switched to this mode.
19. Electronic sound: Scene mode, the indicator light flashes to indicate that it has switched to this mode.
20. Voice Change. There are 4 voice changing modes together.
21. Internal play: When turned on, the sound played by the computer can be recorded back to the computer. When the computer is turned off, the sound played by the computer can only be monitored and cannot be recorded back to the computer.
22. Light effect: short press to adjust the brightness of the cool lights.
23. Ducking: When turned on, the vocals will be highlighted, and the sound of the music will become smaller. When turned off, the music and the vocals are balanced .
24. Denoise: When the noise reduction function is turned on, the external noise is more obvious in the earphone, and there is no external noise when it is turned off.
25. Eliminate : When turned on, the vocals in the computer or external accompaniment and Bluetooth accompaniment will be eliminated, and when turned off, the vocals in the accompaniment will be retained; (requires a stereo source) .
26. MUTE: When it is turned on, the monitor cannot hear the sound input from the microphone and headset, and the sound of the accompaniment, special effect sound and live broadcast room is normal.
27. Special effect sound : Contains 16 special effects sounds, short press to play different sound effects.



A, 5V/1A: This interface can connect the direct broadcast function of the sound card to the computer, can be used as the computer live broadcast with the data line, and can also be charged through the data line connection adapter.

B, 48V: Connect 3.5MM 48V microphone .

C, OTG/ PCLive: For live computer broadcast.

D, Live 1: Connect to mobile phone live broadcast, recording, singing.

E, Live 2: Connect to mobile phone live broadcast, recording, singing.

F, Accompany: The accompaniment line connected to the 3.5mm plug.

G, Earphone: Headphones connected to 3.5mm plugs.

H, Headset: The headset connected to the 3.5mm plug.

I, condenser mic1: capacitor wheat connected to 3.5mm plug.

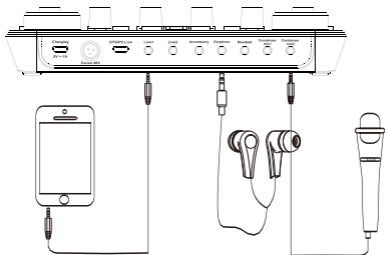
J, condenser mic2: capacitor wheat connected to 3.5mm plug.

VI. Specification parameters

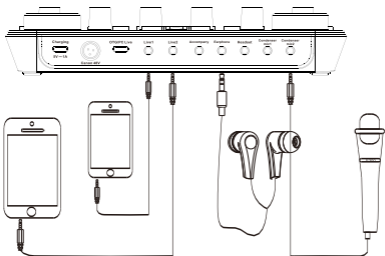
Specification parameter			
Channel system	Output sampling rate	Sampling bits	Use scene
Double channel	44.1KHZ	16bit	Home Outdoor
Weight	Knob	Button	Size
460g	8 piece	33 piece	210X138X42MM
Indicator		USB and live interface	Audio interface
78 piece		Digital communication / charge / live accompaniment	Accompaniment, musical instrument, earphone, headset, condenser microphone
Main battery specification			
Capacity	Electricity consumption	Charging voltage	Charging current
1800mAh	220mA	DC 5V	1A

VII. Seven, schematic diagram of the connection process

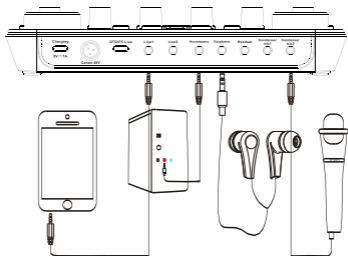
1. Mobile phone recording, live broadcast



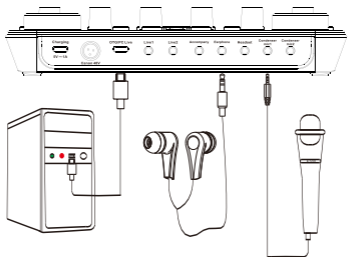
2. Dual mobile phone live broadcast



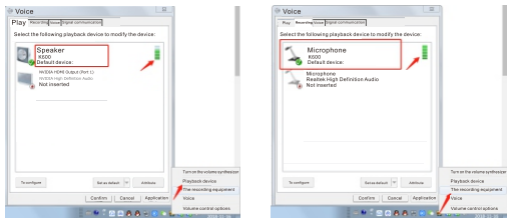
3. Mobile phone live computer accompaniment



4. Computer live broadcast



VIII. Computer accompaniment and computer live debugging diagram

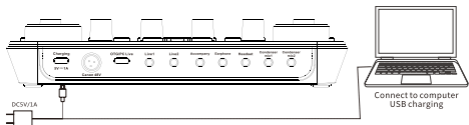


After the sound card is connected to the computer and the computer has recognized the sound card

(1) connect the computer to the host computer with the Micro USB cable, click the small horn in the lower right corner of the computer, and right-click to open the "playback device". If the loudspeaker shows "K600" and is the default device, that is, the sound card driver has been installed successfully and has been recognized by the computer.

(2) Computers or other devices that support OTG function and standard USB protocol all support connection with sound card.

IX. Charging connection



X. Bluetooth connection

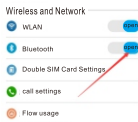


Figure (1)

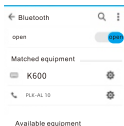


Figure (2)

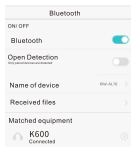


Figure (3)

1. Turn on the Bluetooth of the mobile phone, as shown in Figure (1);
2. The phone will automatically detect the available equipment around, as shown in Figure (2);
3. After the Bluetooth device "K600" is detected, click to start pairing, and it will be successful in about 10 seconds. The monitor earphone on the sound card will prompt "Bluetooth is connected", as shown in Figure (3), then you can select music Send to the sound card via Bluetooth as accompaniment music.

XI. Frequently Asked Questions

1	Can not boot 1. Check whether the power supply is set to the "1" position. 2. Check whether the battery is low or not. You can try to charge the sound card for 20 minutes before turning it on.
2	No sound from monitoring and recording When using a sound card, right-click on the small speaker at the bottom right of the computer and set "K600" as the default recording device and playback setting.
3	Monitor without reverb 1. Check whether it is currently in acoustic mode. 2. Check whether the reverberation volume of the host is adjusted to the minimum.
4	The accompaniment is intermittent and the human voice is normal Check whether the ducking function is turned on. When the ducking is turned on, the accompaniment sound will be reduced when there is sound input from the microphone. When there is no sound input from the microphone, the accompaniment sound will return to normal.
5	Howling Check if the earphone and the microphone are too close, because the microphone is more sensitive, when the earphone or earplug is too close to the capsule, it is easy to produce howling.
6	After finishing the recording, no one's voice only accompaniment 1. If the microphone mute is turned on during recording, check whether the microphone volume is adjusted to the minimum during playback. 2. During the meeting, if the first case is ruled out, check whether the original elimination is turned on.
7	Cannot input sound through the headset interface 1. Check whether the microphone is connected at the same time. When the headset and microphone are connected at the same time, the headset can only monitor. 2. Check if the headset is broken. If you can record or hear the sound, it means that the sound card is successfully connected to the device and you can use it with confidence.

XII. Matters needing attention

1. Since iPhone 7/8/ and a small number of Android phones have only charging holes, they need to bring their own headphone conversion lines for use.
2. Pay attention to waterproof, fire prevention, dust prevention, fall prevention, earthquake protection.
3. Please turn off the power supply when it is not in use and store it in a dry and ventilated place.
4. Before charging the sound card, pay attention to the appropriate voltage of the charger (adapter output 5V DC charger).
5. To ensure the best experience, please use the original audio cable and charging line.
6. Charge the sound card regularly to avoid permanent damage to the battery due to overdischarge of the battery.
7. When live broadcast, the volume of live broadcast and accompaniment mobile phone or computer should be adjusted to the right place, in case there is no sound between live broadcast or recording, do not put live broadcast mobile phone and live broadcast phone in the same area to prevent sound recording back.
8. The sound card is a built-in lithium battery, the battery composition due to the surrounding temperature changes, please do not use in an environment where the temperature is too low and too high, otherwise it will cause permanent damage to the battery.
9. No unauthorized disassembly and modification shall be carried out, and any functional and safety problems arising therefrom shall be borne by the user.
10. All mobile phones have done it in the singing process: after the section (turn off the ear back), the recorded sound must be adjusted back to the appropriate size when the recording is completed, otherwise the recorded sound will not be heard during the tuning process.

XIII. Analysis of relevant knowledge

1. The basic functions of the sound card are two, one playback (the sound heard by the local playback): the second is the recording (the process of storing or transmitting the audio signal of the recording channel locally or on the network through recording, chat, or singing software).
2. When singing, the size of the voice should be adjusted slightly larger than that of the accompaniment.
3. In the reverberation effect, the original sound is called dry sound (DRY) reverberation effect is called wet sound (WET) should use the appropriate reverberation effect when singing, so that the dry sound of the song is clear and the wet sound is properly dyed.
4. Different microphone sound characteristics are quite different:
 - (1) Capacitance meter wind generally has a high degree of balance, fidelity, details are rich, listening feeling is more natural, it is not suitable to put the microphone as far as the mouth, can be placed near the front of the chin, the well to maintain a distance of 5-10 cm, in order to obtain better human sound frequency response and sound pressure, appropriate distance can make the sound more natural and clear, it is best to use with high sealing listening headphones.
 - (2) the moving ring microphone is more prominent in middle and low frequency and thick sound, but the sensitivity is not high and the details are lacking.

Product standard warranty commitment

Nothing in this document shall affect consumers and shall not be excluded or restricted by contract. If the relevant laws otherwise require the provisions of this document, within the scope of the provisions of the law, in accordance with the provisions of the law, the term "we" in this document refers to the manufacturer, product seller and service provider.

1.0 Guarantee range

We guarantee that under normal conditions of use, the products you purchase will not cause performance failures due to non-compliance with quality requirements during the warranty period. The above warranty applies only to the branded products purchased by the user for their own use.

2.0 Warranty period

The warranty period of the product under the correct function and maintenance shall be one year from the date of first purchase, whichever is the invoice date.

3.0 How to obtain warranty services

In the course of normal use, if the product has a non-man-made performance failure, please take the following steps.

3.1 Contact the product seller after a functional failure, and please provide:

Fill in the complete product warranty card.

Complete products, product packaging and accessories.

A copy of the invoice for the sale of goods.

3.2 The product seller or service hotline will tell you how to ship the relevant materials and products and how to handle your repair, and reserve the right to review the damaged products.

4.0 Replacement and return

7 Days can be met, 15 days can be replaced, 1 year warranty, replacement or return, the products should be returned with the attached articles and packaging.

5.0 Unguaranteed scope

The guarantees under this document do not apply to column situations.

5.1 Failure or damage caused by misuse, accident, modification, inappropriate physical or operating environment, natural disasters, electric droplets and improper maintenance or custody.

5.2 Failure or damage caused by third-party products, services or acts; 5.3 failure or damage caused by the use of unspecified software.

5.4 Decolorization occurs in the course of the action of the product. Wear and tear and consumption.

5.5 Data loss or corruption.

5.6 Any advice, advice, tips and product setup and installation assistance.

If the original identification label of the product or component is changed or removed, the warranty under this document will expire. The completeness and appearance of the product are not within the scope of guarantee, and you should object to any discrepancies when you accept the product by checking the well on the spot.

6.0 Global Protection Services

The warranty under this document applies only to areas in Chinese mainland jurisdiction (excluding Hong Kong, Macao and Taiwan, Bay) products sold.

7.0 Product warranty card

Dear users, this warranty card is your future application for warranty voucher, please cooperate with the seller to fill in and take good care of the standby!

Harmful substances and contents of products

Assembly name	Harmful substances or elements					
	Lead (Pb)	Mercury (Hg)	Cadmium (Cd)	Hexavalent chromium (Cr (VI))	Polybrominated biphenyl (PBB)	Polybrominated diphenyl ether (PBDE)
PCB	X	○	○	○	○	○
PCBA Solder joint	X	○	○	○	○	○
Components (including modules)	○	○	○	○	○	○
Metal structural member	○	○	○	○	○	○
Plastic structural member	○	○	○	○	○	○
Paper accessories	○	○	○	○	○	○

This form is prepared in accordance with the provisions of SJ/T11364

○: It means that the content of the toxic and harmful substance in all homogeneous materials of the component is below the limit specified by GB/T26572.

X: Indicates that the toxic and harmful substance is contained in at least one homogeneous material of the component in excess of the limit specified by GB/T26572

▲: Warning: this product with lithium batteries shall not be exposed to conditions such as sunshine baking or similar overheating.